



MX-8090N / MX-7090N

Pro Series Colour Light Production Printing Systems

www.sharp.eu

SHARP

Be Original.

Print room productivity.

Exceptional performance. Professional features. World-class image quality. You know it's a Sharp.

Printing shouldn't be difficult. And with the 80 pages per minute (ppm) MX-8090N and the 70 ppm MX-7090N it isn't. Now you can produce large volumes of professional quality documents, on demand and at a moment's notice, on a huge range of media. What's more, there's even a 'simple' mode for rapid production of routine documents.

Class-leading print technology

Best-in-class media handling, high input capacity and a unique ability to print right to the edge of landscape format documents, helps operators to quickly create high quality, full bleed booklets in-line.

Plus, if you specify an embedded EFI Fiery controller you can operate it directly from our largest ever integrated colour touchscreen. That means that you won't need to sacrifice space by adding a dedicated PC, external server or special furniture.

[Learn more about productivity](#)

Alternatively, we can supply the model of your choice with an external Fiery controller, unlocking the full power of EFI's colour management and workflow automation software. It's your choice.

Whichever solution you decide is right for you, the power and versatility of these printing powerhouses will deliver professional-looking documents with faster workflows and precise colour control for the whole workgroup.





Overview ● ● ●

High performance colour ● ● ● ●

Productivity ● ● ● ● ●

Security & Environment

Configuration examples

Configurations

Options ● ●

Specifications

Print room productivity.

Exceptional performance. Professional features. World-class image quality. You know it's a Sharp.

Printing shouldn't be difficult. And with the 80 pages per minute (ppm) MX-8090N and the 70 ppm MX-7090N it isn't. Now you can produce large volumes of professional quality documents, on demand and at a moment's notice, on a huge range of media. What's more, there's even a 'simple' mode for rapid production of routine documents.

Class-leading print technology

Best-in-class media handling, high input capacity and a unique ability to print right to the edge of landscape format documents, helps operators to quickly create high quality, full bleed booklets in-line.

Plus, if you specify an embedded EFI Fiery controller you can operate it directly from our largest ever integrated colour touchscreen. That means that you won't need to sacrifice space by adding a dedicated PC, external server or special furniture.

Learn more about productivity

The MX-8090N/7090N has all the features you need in a light production printing system, including a wide range of paper feeding and finishing options.

You can also pair the MFP with a Fiery print server – external or embedded – to get the advantage of more efficient print management.

Alternatively, we can supply the model of your choice with an external Fiery controller, unlocking the full power of EFI's colour management and workflow automation software. It's your choice.

Whichever solution you decide is right for you, the power and versatility of these printing powerhouses will deliver professional-looking documents with faster workflows and precise colour control for the whole workgroup.



Overview ●●●●

High performance colour ●●●●●

Productivity ●●●●●●

Security & Environment

Configuration examples

Configurations

Options ●●

Specifications

Modular design

It's all here. An impressive range of paper input and document finishing options lets you take on a huge variety of jobs. Powerful processing technology, deeply integrated with Adobe technology and Fiery SmartRIP, lets you fulfil demands faster and with greater precision.

What's more, the modular design means that the configuration you specify today can be easily upgraded if your needs change in the future.

The standard paper supply, for example, can grow to 13,500 sheets. Not only does that give you longer uninterrupted printing for maximum productivity, but you can load the trays with a wide variety of media, ready to tackle a range of tasks as and when they are presented.

On the lightest media through to the heaviest, and on coated, uncoated and textured stock, from the input tray through to the curl correction unit and on to the finishing systems of your choice, Sharp Pro Series Colour Light Production Printing Systems will take care of all of your document needs.



Exceptional colour. Effortless control.

When every deadline counts, we make sure that you can always rise to the challenge.

We understand the pressure of deadlines. That's why we engineered the MX-8090N and MX-7090N to handle the widest possible range of jobs in the greatest variety of print environments. Then we added a 15.4" colour touch screen for intuitive, multi-touch finger-swipe control of an embedded or external Fiery server.

Whichever model you choose, you can be confident of a production-class colour printing system with the performance, versatility and ease of use you need to satisfy your most demanding requirements.



Easy productivity

The embedded controller simplifies colour management and print job programming with easy-to-master colour tools, without compromising quality.

Skilled operators will appreciate advanced functions such as auto trapping, standard and custom ICC profiles, and RGB to CMYK colour conversion, but even casual users will find it easy to adjust RGB colour balance, image brightness, contrast and saturation.

Because Fiery servers can spool, RIP and print simultaneously, the printing system can run at its full rated speed regardless of which configuration you decide on. You'll find productivity is enhanced across the print room and jobs are turned around faster than ever.

*Create fast, efficient workflows with
Fiery Command WorkStation®*

Overview ● ● ●

**High
performance
colour** ● ● ● ●

Productivity ● ● ● ● ●

Security &
Environment

Configuration
examples

Configurations

Options ● ●

Specifications



Exceptional colour. Effortless control.

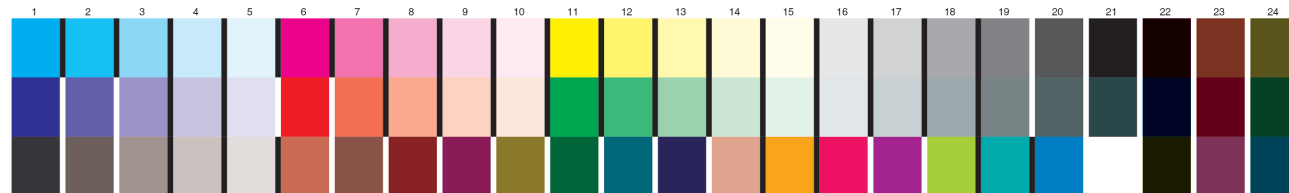
When every deadline counts, we make sure that you can always rise to the challenge.

The MX-PE13/PE14 Fiery Server offers a centralised solution that features the award-winning Command WorkStation® with a de facto industry-standard print job management user interface.

It's intuitively easy to preview jobs, check their progress, and do reprints. With the MX-PE13, Command WorkStation is fully integrated at the MFP's control panel. This allows you to monitor, control, and troubleshoot production directly from the touchscreen.

An optional touch pad (part of the MX-PX13 Fiery Interface Kit for the MX-PE13) allows you to control an on-screen mouse.





Measurement wedge can be used with Fiery Colour Profiler* Suite to verify that the print engine is in compliance with industry standards such as ISO Coated Fogra.

Precise, consistent colour

All Fiery servers are PANTONE® calibrated to guarantee the best match for all PANTONE colour libraries. Fiery colour management tools for colour matching, profiling, preflight and troubleshooting guarantee the best colour consistency and accuracy.

Industry-leading technology

Winner of multiple awards, Fiery Command WorkStation® makes it easy for local and remote Mac and PC clients to control Fiery servers, manage colour, submit jobs, preview jobs before printing, and more.

Fiery servers come with a wide range of workflow and colour management software tools needed for enterprise-level printing environments, giving you complete control over every part of the production workflow.

Convenient variable data printing

Fiery software is also ideal for creating personalised communications with variable data printing (VDP). Compatible with all VDP protocols, languages and applications, they let you work with the authoring tool of your choice to create static and variable elements.



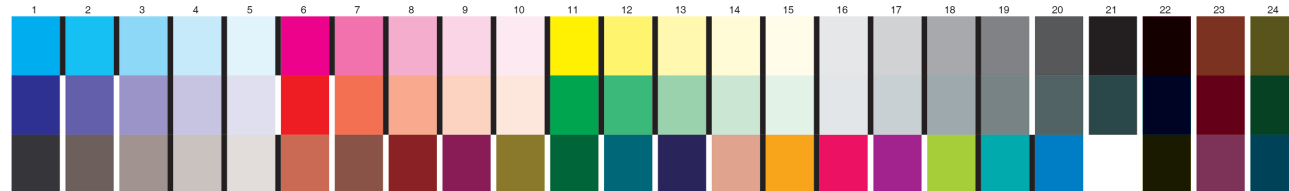
MX-PE13 External Fiery Server.



MX-PE14 Embedded Fiery Server.

[Learn more about EFI Fiery controllers](#)

*To use the three-row wedge, you need to use Colour Profiler Suite v4.6 or above.



Measurement wedge can be used with Fierey Colour Profiler* Suite to verify that the print engine is in compliance with industry standards such as ISO Coated Fogra.

Precise, consistent colour

All Fierey servers are PANTONE® calibrated to guarantee the best match for all PANTONE colour libraries. Fierey colour management tools for colour matching, profiling, preflight and troubleshooting guarantee the best colour consistency and accuracy.

Industry-leading technology

Winner of multiple awards, Fierey Command WorkStation® makes it easy for local and remote Mac and PC clients to control Fierey servers, manage colour, submit jobs, preview jobs before printing, and more.

Fierey servers come with a wide range of workflow and colour management software tools needed for enterprise-level printing environments, giving you complete control over every part of the production workflow.

[Learn more about EFI Fierey controllers](#)

*To use the three-row wedge, you need to use Colour Profiler Suite v4.6 or above.

Convenient variable data printing

Fierey software is also ideal for creating personalised communications with variable data printing (VDP). Compatible with all VDP protocols, languages and applications, they let you work with the authoring tool of your choice to create static and variable elements.



MX-PE13 External Fierey Server.



MX-PE14 Embedded Fierey Server.

	MX-PE13 external server	MX-PE14 embedded server
CPU Type	Intel® Core™ i5-6500 processor	Intel® Celeron® Processor G1820
Memory	4 GB, 1 TB HDD	2 GB, 500 GB HDD
Command WorkStation	Operated via MFP touchscreen and remote PC	Operated via remote PC
VDP Formats	PPML 3.0, PDF/VT-2, VPS, VIPP, Fierey FreeForm	Fierey FreeForm
Adobe PDF Print Engine	Standard	-
EFI MIS, Web-to-Print	Standard	-
Sequential Print	Standard	-
Graphic Arts	Standard	-
Package	Premium Edition	Options

Overview ● ● ●

High performance colour ● ● ● ●

Productivity ● ● ● ● ●

Security & Environment

Configuration examples

Configurations

Options ● ●

Specifications



Total productivity.

Designed from the ground up for performance, reliability and ease of use.

Maximum uptime

No one likes interruptions. So we designed the MX-8090N and MX-7090N for total productivity.

An advanced triple-air feed system drives smooth paper handling for trouble-free print runs. The integrated double-sided scanning is as fast as you need, with as many as 200 impressions per minute. A large, expandable paper supply lets you take on the largest jobs with confidence and you can load more paper and toner at any time, without ever pausing the print run.

And as time goes by, you can build up a collection of customised document, job and media profiles, which can be retrieved to make repeat jobs even quicker.

It all adds up to total productivity and professional output for the best possible return on investment.

Maximise uptime - learn more about status alerts



Overview ● ● ●

High performance colour ● ● ● ●

Productivity ● ● ● ● ●

Security & Environment

Configuration examples

Configurations

Options ● ●

Specifications



Total productivity.

Designed from the ground up for performance, reliability and ease of use.

Maximum uptime

No one likes interruptions. So we designed the MX-8090N and MX-7090N for total productivity.

An advanced triple-air feed system drives smooth paper handling for trouble-free print runs. The integrated double-sided scanning is as fast as you need, with as many as 200 impressions per minute. A large, expandable paper supply lets you take on the largest jobs with confidence and you can load more paper and toner at any time, without ever pausing the print run.

And as time goes by, you can build up a collection of customised document, job and media profiles, which can be retrieved to make repeat jobs even quicker.

It all adds up to total productivity and professional output for the best possible return on investment.

Maximise uptime - learn more about status alerts

The optional Status Indicator provides status alerts, including notice of errors, via green and red LED lights that can easily be seen from a distance.



Overview ● ● ●

High performance colour ● ● ● ●

Productivity ● ● ● ● ●

Security & Environment

Configuration examples

Configurations

Options ● ●

Specifications



Complexity made easy

Although the MX-8090N and MX-7090N are extremely capable, they are surprisingly easy to use, with many 'simple' settings to take care of ordinary everyday jobs.

Advanced system architecture and a fast processor lets you print large and complex documents quickly and with excellent colour accuracy. And you get genuine Adobe PS3 to support advanced graphic applications, too.

20-sheet booklet-making with optional trimming; stapling and hole-punching; page insertion, and a variety of folds, can all be managed in a seamlessly smooth operation. Plus, you can rise to the challenge every time with the industry-leading GBC SmartPunch inline punching system and the Plockmatic professional booklet making unit.



Learn more about full-bleed booklet making

Overview ● ● ●

High performance colour ● ● ● ●

Productivity ● ● ● ● ●

Security & Environment

Configuration examples

Configurations

Options ● ●

Specifications



Complexity made easy

Although the MX-8090N and MX-7090N are extremely capable, they are surprisingly easy to use, with many 'simple' settings to take care of ordinary everyday jobs.

Advanced system architecture and a fast processor lets you print large and complex documents quickly and with excellent colour accuracy. And you get genuine Adobe PS3 to support advanced graphic applications, too.

20-sheet booklet-making with optional trimming; stapling and hole-punching; page insertion, and a variety of folds, can all be managed in a seamlessly smooth operation. Plus, you can rise to the challenge every time with the industry-leading GBC SmartPunch inline punching system and the Plockmatic professional booklet making unit.

Learn more about professional in-line finishing options

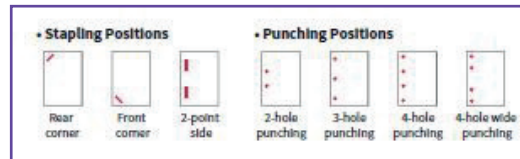


Learn more about full-bleed booklet making

The MX-8090N/7090N's edge-to-edge printing feature ensures printing to the top and bottom edges of the page, so that only the void areas of the lead and trail edges need to be trimmed for a full-bleed effect. This feature allows production of full-bleed A4-size booklets up to 80 pages in length. Using this function with the Saddle Stitch Finisher and Trimming Module enables users to automatically create high-quality, professional-looking booklets in-line, helping to reduce both outsourcing costs and production times.

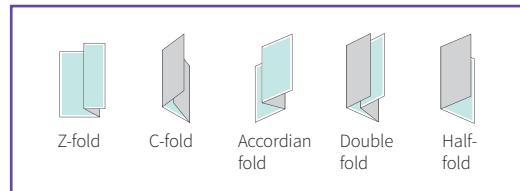
Stapling and punching

With a maximum output capacity of 4,250 sheets, handy Finishers provide three stapling positions—front corner, rear corner, and two-point side—for up to 100 sheets per set. Two-to-four-hole punching is available as an option.



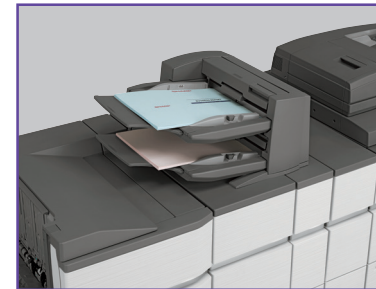
Variety of folds

The MX-FD10 Folding Unit automates various types of folding, such as z-folding and c-folding, for efficient production of direct mail, brochures, and more.



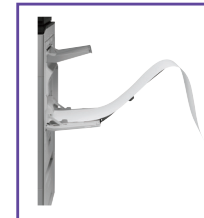
*1: For A3- and A4-size (short-edge feed) paper. Z-fold and half-fold pages are rejected from the finisher (MX-FN22/FN21).

*2: For A4-size (short-edge feed) paper.



Insertion

For truly professional results, the Inserter can add pre-printed covers and insert paper up to 220 g/m² to documents before final finishing. Two input trays, each with a capacity of 200 sheets, make it possible to feed in two different types of paper.



Long-paper printing

The MX-LT10 Long Paper Feeding Tray accommodates extra-long paper up to 1,300 mm—expanding the range of print products to include panoramic pictures, large display-window ads, banner signs, and more.

50th Anniversary Celebration.
October 5 & 6.
Drive away with more than you bargained for.

C's Motors

Overview ● ● ●

High performance colour ● ● ● ●

Productivity ● ● ● ● ●

Security & Environment

Configuration examples

Configurations

Options ● ●

Specifications



Robust security

Data security is everyone's concern. And with tough new laws such as the General Data Protection Regulation (GDPR) placing stringent obligations on anyone who collects, stores or processes the personal data of EU residents, you need every part of your network to be compliant. That includes printers.

The MX-8090N and MX-7090N come with layer upon layer of robust but unobtrusive security. Powerful encryption, network protocol filtering, document control, activity logs, strong password protection and secure erasure capabilities work together, ensuring that confidential information and intellectual property are protected whether you're copying, scanning or printing.

Impeccable environmental credentials

Like all Sharp printing systems, the MX-8090N and MX-7090N have been designed and engineered to be as environmentally friendly as possible.

The Pro Series Light Production systems use Sharp's advanced micro-fine toner technology, which offers a lower consumption rate, less waste and longer replacement intervals.

Our supplies are packaged using fully recyclable materials and long-life consumable parts help minimise service intervals and downtime. LED lights in the scanner, a choice of energy-saving modes and a fuser which can turn itself off all help you balance productivity with economy.



Overview ● ● ●

High performance colour ● ● ● ●

Productivity ● ● ● ● ●

Security & Environment

Configuration examples

Configurations

Options ● ●

Specifications



Making the right choice.

Whether you're running a commercial print business or an in-house reprographics department there's a configuration to suit your needs.

If you're looking for a powerful production-class printing system, choose an MX-8090N or MX-7090N with an embedded Fiery controller. For the ultimate in colour management and workflow productivity, specify the external Fiery Controller.



Basic all-rounder



Flexible and versatile



Hours of uninterrupted printing



Overview ● ● ●

High performance colour ● ● ● ●

Productivity ● ● ● ● ● ●

Security & Environment

Configuration examples

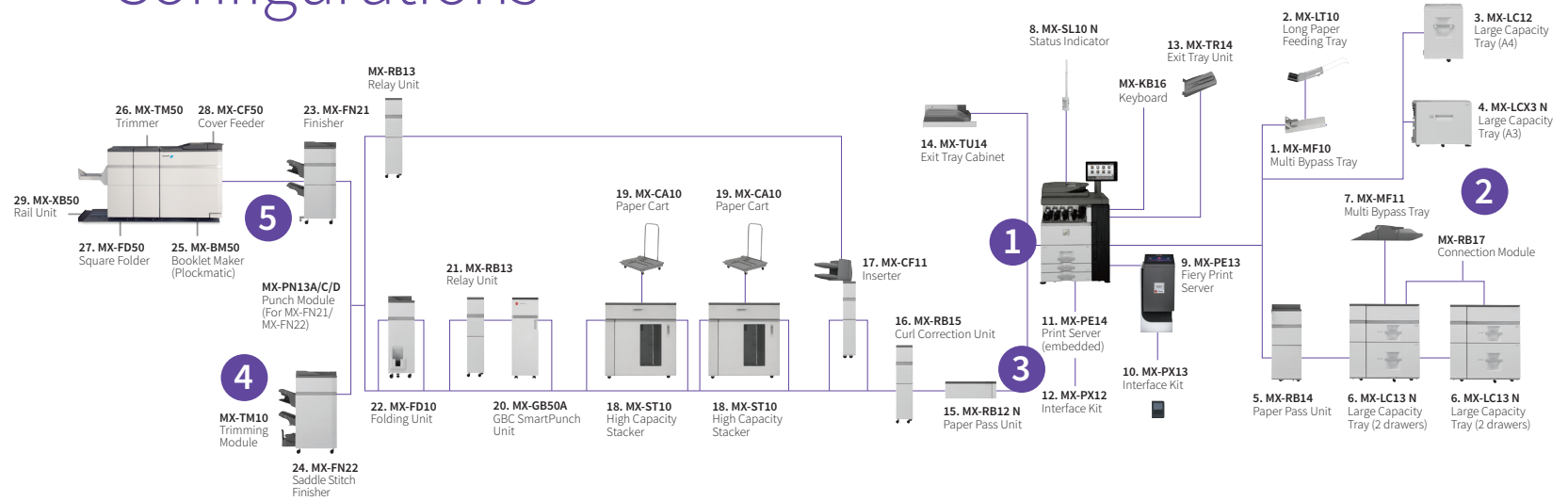
Configurations

Options ● ●

Specifications



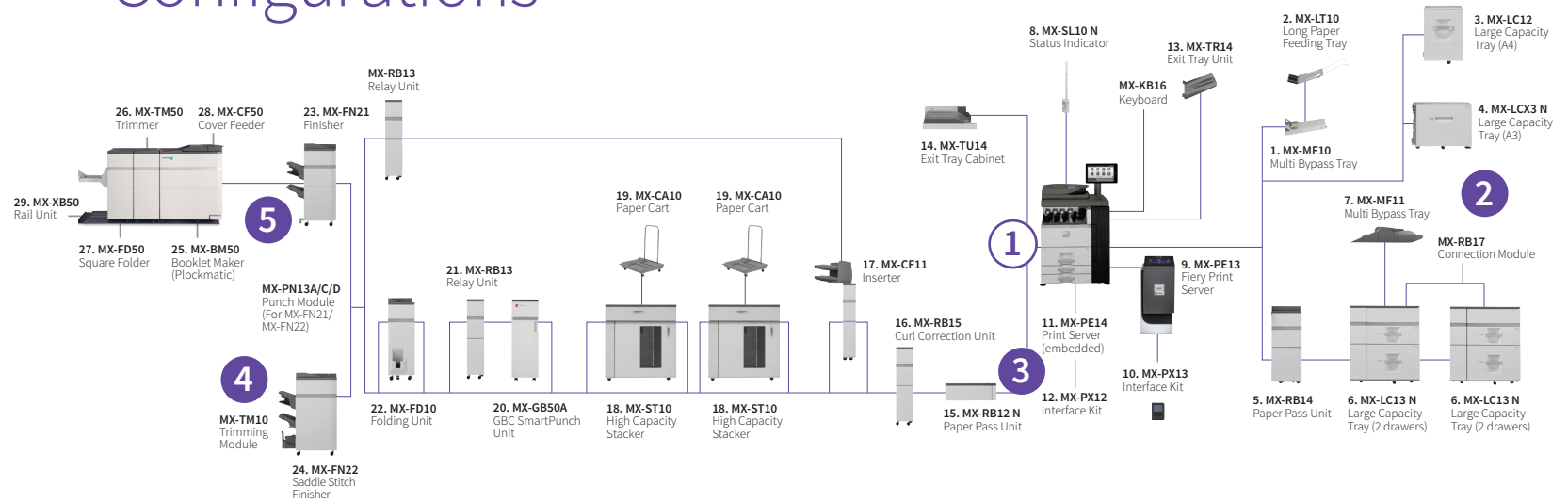
Configurations



Click 1-5 for details



Configurations



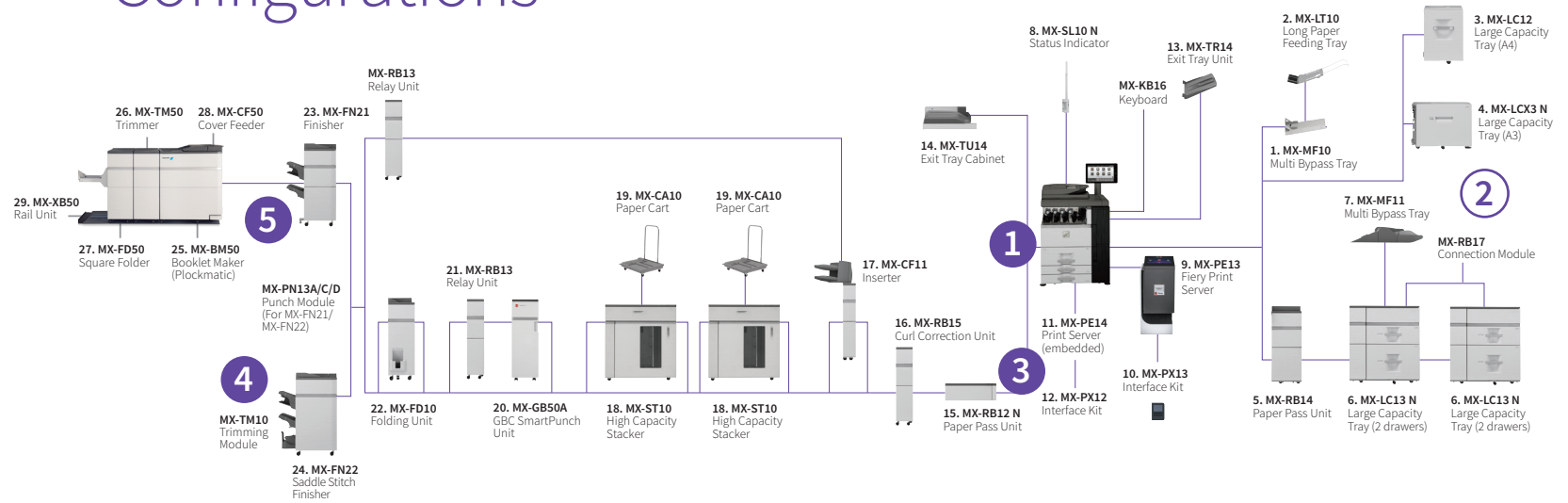
1

Base unit 80 ppm / 70 ppm engine

MX-SL10 N Status Indicator Lamp



Configurations

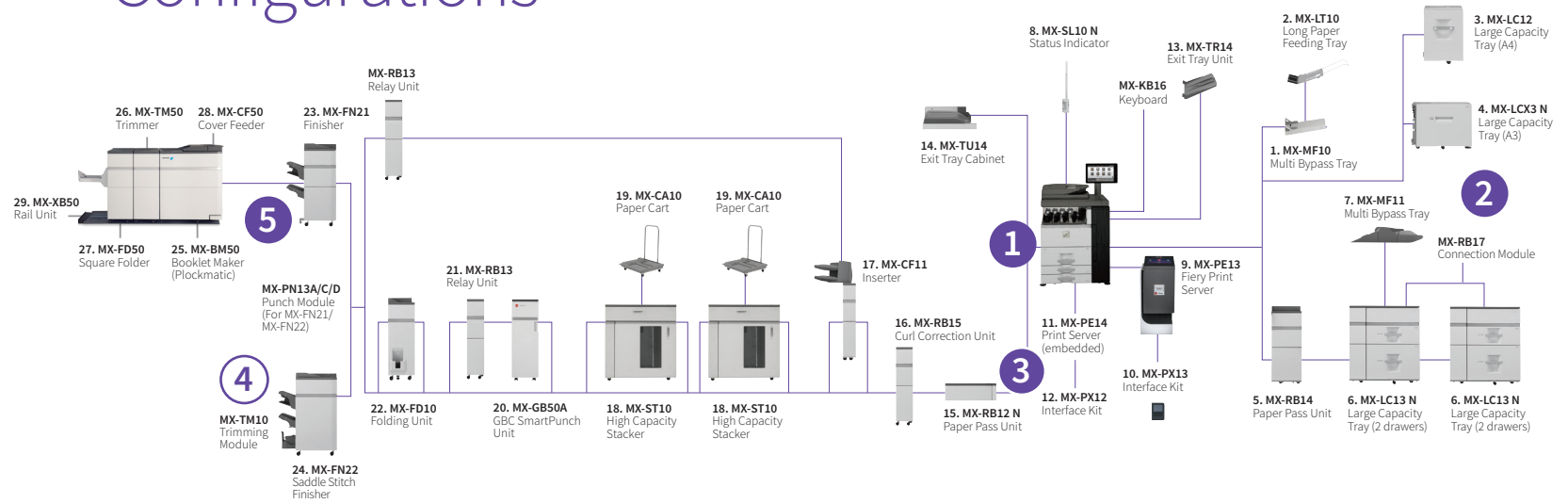


2

- MX-TR14 Exit Tray Unit
- MX-LT10 Long Paper Feeding Tray
- MX-MF10 Multi-bypass Tray
- MX-LC12 Large Capacity Tray (A4)
- MX-LCX3 N Large Capacity Tray (A3)
- MX-MF11 Multi Bypass Tray
- MX-LC13 N Large Capacity Trays



Configurations

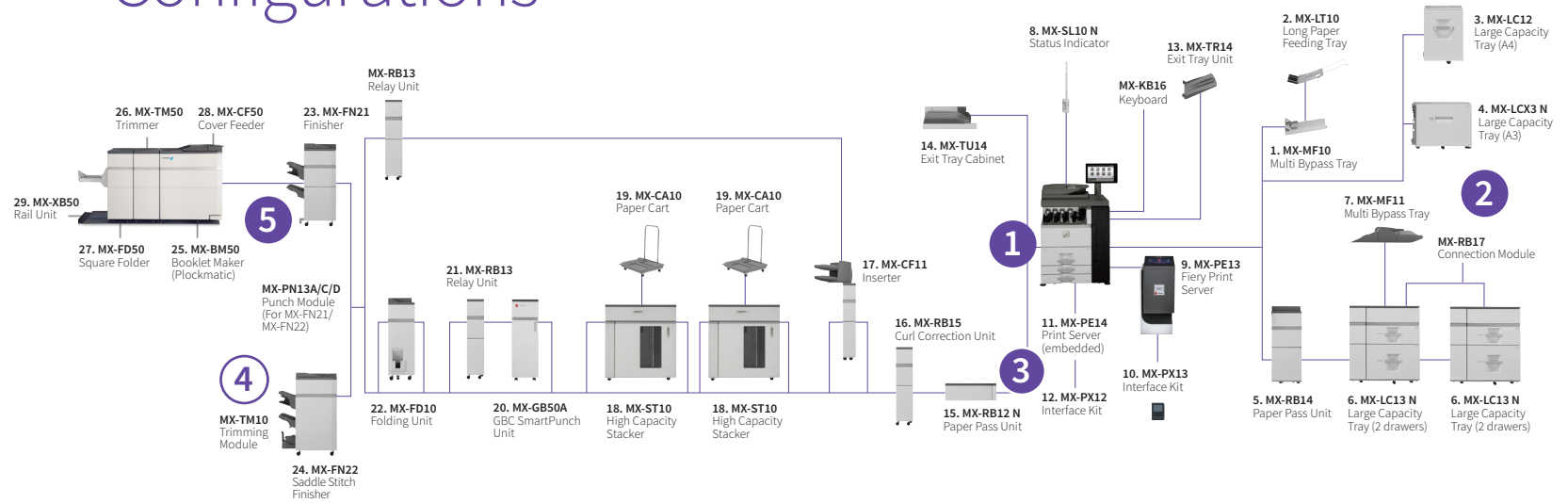


4

- MX-TU14 Exit Tray Cabinet
- MX-RB15 Curl Correction Unit
- MX-CF11 Inserter
- MX-ST10
- MX-GB50A GBC SmartPunch Unit
- MX-FD10 Folding Unit



Configurations



16. MX-RB15
Curl Correction Unit

MX-TU14 Exit Tray Cabinet

MX-RB15 Curl Correction Unit

- Correction of paper curl providing flatter output and improved paper handling
- Required for MX-FN21 & MX-FN22 Finishers

MX-CF11 Inserter

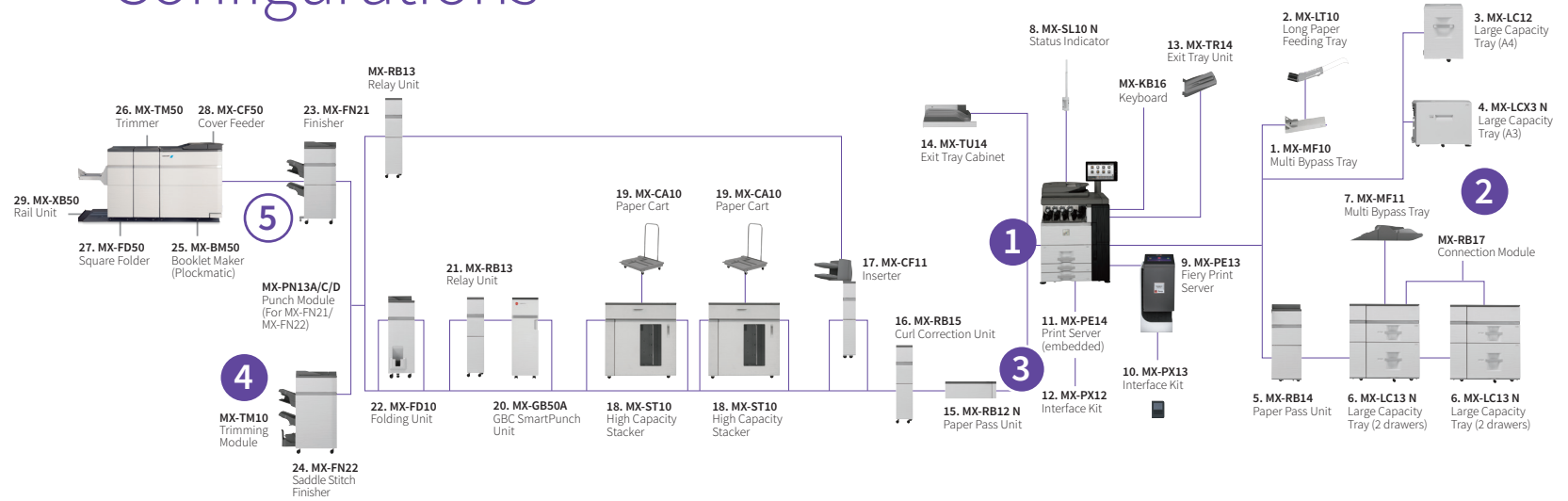
MX-ST10

MX-GB50A GBC SmartPunch Unit

MX-FD10 Folding Unit



Configurations



5



23. MX-FN21 Finisher

MX-FN21 Finisher

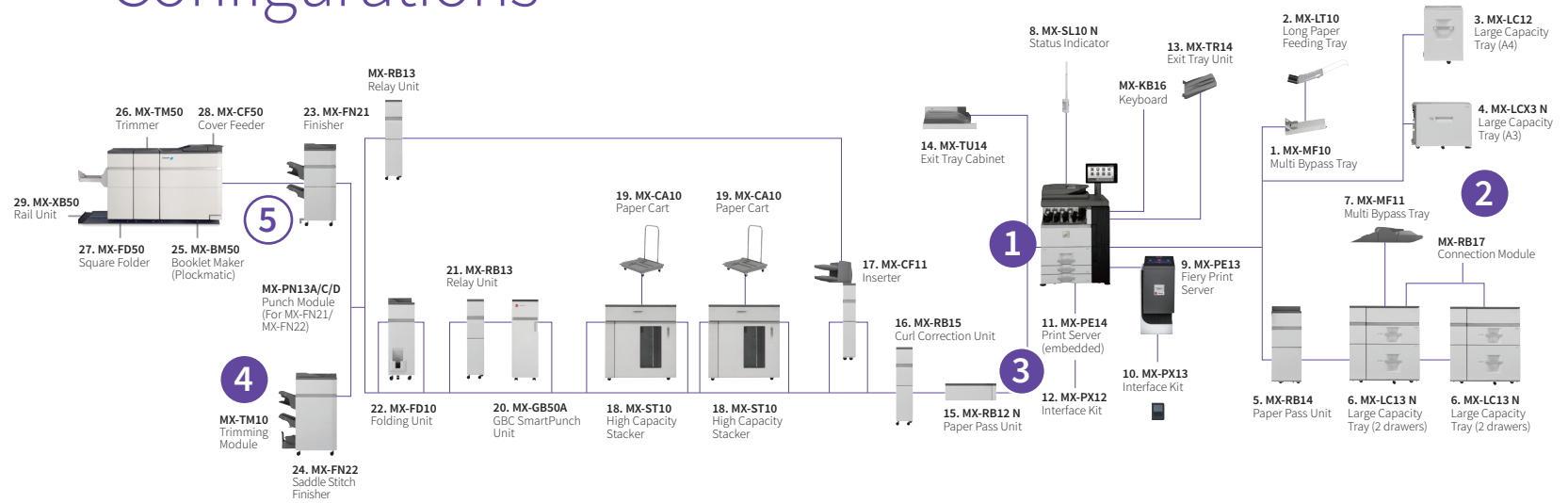
- Higher capacity 4,000 sheet Finisher with 100 sheet stapling
- Offset documents for easy distribution
- Hole punch option available for binding offline

MX-FN22 Saddle Stitch Finisher

MX-BM50 Booklet Maker



Configurations



5



25. MX-BM50 Booklet Maker

- MX-FN21 Finisher
- MX-FN22 Saddle Stitch Finisher
- MX-BM50 Booklet Maker

- Create full bleed booklets
- Requires MX-FN21 Finisher and MX-XB50 Rail Unit
- The MX-CF50 Cover Feeder option requires MX-BM50.
- The MX-TM50 Trimmer option; Trim Length: 1-16mm, Default: 4.5mm. Requires MX-BM50.
- The MX-FD50 Square Folder option include Z, C, accordion, double and half folds. Requires MX-BM50 & MX-TM50.
- MX-XB50 Rail Unit. Requires MX-BM50.



Options

Base Unit

MX-KB16 Keyboard

1. MX-MF10 Multi Bypass Tray (for main machine)
A5R - A3W (also supports 13" x 19.2"), 100 sheets (80g/m²)
Cannot be installed with MX-LC13 N.

2. MX-LT10 Long Paper Feeding Tray
Recommended for banner printing.

3. MX-LC12 Large Capacity Tray (A4)
A4 - B5, 3,500 sheets (80g/m²)
Requires MX-MFX1. Cannot be installed with MX-LCX3 N or MX-LC13 N.

4. MX-LCX3 N Large Capacity Tray (A3)
A3 - A4R (also supports 13" x 19.2"), 3,000 sheets (80g/m²)
Requires MX-MFX1. Cannot be installed with MX-LC12 or MX-LC13 N.

5. MX-RB14 Paper Pass Unit (between main machine and MX-LC13 N)
Must be installed with MX-LC13 N.

6. MX-LC13 N Large Capacity Tray (2 drawers)
SRA3 - A4R (also supports 13" x 19.2"), 2,500 sheets each (80g/m²)
Requires MX-RB16. Cannot be installed with MX-LC12 or MX-LCX3 N.

MX-RB17 Connection Module
Required if 2 x MX-LC13 N are installed.

7. MX-MF11 Multi Bypass Tray (for MX-LC13 N).
SRA3 - A5R (also supports 13" x 19.2"), 500 sheets (80g/m²)

8. MX-SL10 N Status Indicator

9. MX-PE13 Fiery Server
Requires MX-PX13.

10. MX-PX13 Interface Kit
Requires MX-PE13.

11. MX-PE14 Fiery Server (embedded)
Requires MX-PX12.

12. MX-PX12 Interface Kit
Requires MX-PE14.

Finishing

13. MX-TR14 Exit Tray Unit
Cannot be installed with MX-RB14, MX-LC13 N and MX-MF11.

14. MX-TU14 Exit Tray Cabinet

15. MX-RB12 N Paper Pass Unit (for main machine)

16. MX-RB15 Curl Correction Unit
Corrects paper curling by putting pressure on the convex/concave curl.
Required if MX-FN21 or MX-FN22 is installed.

17. MX-CF11 Inserter (200-sheet x 2 bin)
SRA3 - A5R, 200 sheets each (80g/m²).
Requires MX-RB15 and either MX-RB13 or MX-FD10 if connecting to MX-FN21 or MX-FN22.

18. MX-ST10 High Capacity Stacker
SRA3 - A5R
Paper stacking tray: 5,000 sheets (80g/m²)
Top tray: 250 sheets (80g/m²)
Requires MX-RB15.

19. MX-CA10 Paper Cart
Included with MX-ST10.
For transporting finished documents to another location.

20. MX-GB50A GBC SmartPunch Unit
Paper Size: A4
Paper Weight: 75-216 g/m²
Requires MX-RB13 and either MX-FN21 or MX-FN22

21. MX-RB13 Relay Unit
(between 100-sheet finisher and inserter).
Must be installed if MX-FD10 is not required.
Required if MX-GB50A is installed.

22. MX-FD10 Folding Unit
Folding options include Z, C, accordion, double and half folds.
Can only be installed with MX-FN21 or MX-FN22.



Options

Finishing

23. MX-FN21 Finisher (4k - 100-sheet staple)
A3 - B5 (offset/staple), SRA3 - A5R (non offset)
Requires MX-RB15. Cannot be installed with MX-FN22.

24. MX-FN22 Saddle Stitch Finisher (4k - 100-sheet staple)
A4, A3, SRA3
Paper size: 206 x 275 mm (Min) to 320 x 457.2 mm (Max)
Paper Weight: 64-300 g/m²
Capacity: 1-30 sheets* (stapled and folded)
Requires MX-BM50 & MX-TM50.

MX-PN13A/C/D Punch Module (for MX-FN21 or MX-FN22)
A: 2 hole punch, C: 2/4 hole punch, D: 4 hole wide punch

MX-TM10 Trimming Module (for MX-FN22)
Up to 20 mm trim width, 1,500 sheets (80 g/m²)

25. MX-BM50 Booklet Maker (Plockmatic)
A4, A3, SRA3
Requires MX-FN21 and MX-XB50.

26. MX-TM50 Trimmer (for Plockmatic)
A4, A3, SRA3
Paper size: 206 x 275 mm (Min) to 320 x 457.2 mm (Max)
Paper Weight: 64-300 g/m²
Capacity: 1-30 sheets* (stapled and folded)
Requires MX-BM50.

27. MX-FD50 Square Folder (for Plockmatic)
A4, A3, SRA3
Paper size: 206 x 275 mm (Min) to 320 x 457.2 mm (Max)
Paper Weight: 64-300 g/m²
Capacity: 1-30 sheets* (stapled and folded)
Requires MX-BM50 & MX-TM50.

28. MX-CF50 Cover Feeder (for Plockmatic)
Paper Weight: 70-250 g/m²
Capacity: 20mm (approx. 200 sheets of 80g/m² paper)
Requires MX-BM50.

29. MX-XB50 Rail Unit
Requires MX-BM50.

* A4 or smaller, 80 g/m².

Connectivity

Printing
MX-PF10 Barcode Font Kit
Enables barcode printing.

Scanning
AR-SU1 Stamp Unit
Marks already scanned documents for checking.

Sharp OSA®
MX-AMX1 Application Integration Module

Security
MX-FR58U Data Security Kit (non CC version).



Specifications

General
Copier
Network Printer
EFI Fiery Controller (optional MX-PE13 & MX-PE14)
Colour Network Scanner
Document Filing
External Dimensions

Click the specification buttons for further information



^{*1} Long-edge feeding. ^{*2} Only short-edge feeding can be used with A5 (5 ½" x 8 ½") paper. ^{*3} At rated voltage, May vary depending on operating conditions and environment. ^{*4} HDD capacity depends on procurement and sourcing status. ^{*5} Including adjusters and protuberances. ^{*6} Long-edge feeding of A4 (8 ½" x 11") sheets from 2nd paper tray, using document glass, without Auto Colour Selection and Auto Colour mode, MFP in fully ready condition. May vary depending on operating conditions and environment. ^{*7} Resolution will vary depending on the size of the scanned area. ^{**} Colour/greyscale only. ^{**} Storage capacity will vary depending on the type of document and the scan settings.

Design and specifications are subject to change without prior notice. All information was correct at time of print. The ENERGY STAR logo is a certification mark and may only be used to certify specific products that have been determined to meet the ENERGY STAR programme requirements. ENERGY STAR is a US registered mark. Windows, Windows XP, Windows Server and Windows Vista are registered trademarks of Microsoft Corporation. Adobe and PostScript 3 are either registered trademarks or trademarks of Adobe Systems Incorporated in the U.S. and/or other countries. All other company names, product names, and logotypes are trademarks or registered trademarks of their respective owners. ©Sharp Corporation March 2018. Ref: Interactive Brochure MX-8090N/MX-7090N Job Ref 18888. All trademarks acknowledged. E&OE.



Specifications

General
Copier
Network Printer
EFI Fiery Controller (optional MX-PE13 & MX-PE14)
Colour Network Scanner
Document Filing
External Dimensions

Click the specification buttons for further information



A4*1 Engine speed (ppm) (Plain / Coated) (Max)	MX-7090N	MX-8090N
52 – 105 g/m ²	70 / 70	80 / 80
106 – 220 g/m ²	38 / 38	38 / 38
221 – 300 g/m ²	30 / 30	30 / 30
A3 Engine speed (ppm) (Plain / Coated) (Max)	MX-7090N	MX-8090N
52 – 105 g/m ²	41 / 41	45 / 45
106 – 220 g/m ²	23 / 23	23 / 23
221 – 300 g/m ²	18 / 18	18 / 18
SRA3 Engine speed (ppm) (Plain / Coated) (Max)	MX-7090N	MX-8090N
52 – 105 g/m ²	39 / 39	43 / 43
106 – 220 g/m ²	22 / 22	22 / 22
221 – 300 g/m ²	17 / 17	17 / 17
Paper weight (g/m ²) (Min – Max)		
Drawer 1 & 2	60 – 105	
Drawer 3 & 4	60 – 220	
MX-MF10	55 – 300	
MX-MF11	55 – 220	
MX-LC12	60 – 220	
MX-LCX3 N	60 – 220	
MX-LC13 N	55 – 300	
Paper size** (Min – Max)		
Drawer 1 & 2	A4	
Drawer 3	B5R – A3W	
Drawer 4	A5R – A3W	
MX-MF10/MX-MF11	A5R – SRA3 (also supports 13" x 19.2")	
MX-LC12	B5 – A4	
MX-LCX3 N	B5 – A3W (also supports 13" x 19.2")	
MX-LC13 N	B5 – SRA3 (also supports 13" x 19.2")	
Paper input capacity (Min – Max)		
A4	3,100 – 13,500	
A3	1,000 – 11,500	
SRA3	100 – 10,500	
Paper output capacity (Min – Max)		
A4 / A3 / SRA3	250 – 10,500	
Warm-up time**3 (seconds)	90	
Duplex	Std	
Memory		
Copier/Printer (shared)	5 GB	
HDD**4	1 TB	
Power requirements	220 to 240V/8A, 50/60Hz (10A plug x 2)	
Power consumption (kW) (Max)	3.84	
Dimensions**5 (mm) (W x D x H)	982 x 768 x 1,530	
Weight (kg)	223.8	

*1 Long-edge feeding. ** Only short-edge feeding can be used with A5 (5 ½" x 8 ½") paper. **3 At rated voltage, May vary depending on operating conditions and environment. **4 HDD capacity depends on procurement and sourcing status. **5 Including adjusters and protuberances. **6 Long-edge feeding of A4 (8 ½" x 11") sheets from 2nd paper tray, using document glass, without Auto Colour Selection and Auto Colour mode, MFP in fully ready condition. May vary depending on operating conditions and environment. **7 Resolution will vary depending on the size of the scanned area. **8 Colour/greyscale only. **9 Storage capacity will vary depending on the type of document and the scan settings.

Design and specifications are subject to change without prior notice. All information was correct at time of print. The ENERGY STAR logo is a certification mark and may only be used to certify specific products that have been determined to meet the ENERGY STAR programme requirements. ENERGY STAR is a US registered mark. Windows, Windows XP, Windows Server and Windows Vista are registered trademarks of Microsoft Corporation. Adobe and PostScript 3 are either registered trademarks or trademarks of Adobe Systems Incorporated in the U.S. and/or other countries. All other company names, product names, and logotypes are trademarks or registered trademarks of their respective owners. ©Sharp Corporation March 2018. Ref: Interactive Brochure MX-8090N/ MX-7090N Job Ref 18888. All trademarks acknowledged. E&OE.

Specifications

General
Copier
Network Printer
EFI Fiery Controller (optional MX-PE13 & MX-PE14)
Colour Network Scanner
Document Filing
External Dimensions

Click the specification buttons for further information

Original paper size (Max)	A3	
First copy time ** (seconds)	Colour	B/W
MX-8090N	5.1	3.7
MX-7090N	5.6	4.0
Continuous copies (Max)	9,999	
Resolution (dpi)		
Print (Colour)	600 x 600, 9600 (equivalent) x 600	
Print (B/W)	1200 x 1200, 600 x 600, 9600 (equivalent) x 600	
Gratation levels	256	
Zoom range (%)	25 – 400 (25 – 200 using DSPF) in 1% increments	
Preset copy ratios	10 (5R/5E)	



*¹ Long-edge feeding. *² Only short-edge feeding can be used with A5 (5 ½" x 8 ½") paper. *³ At rated voltage, May vary depending on operating conditions and environment. *⁴ HDD capacity depends on procurement and sourcing status. *⁵ Including adjusters and protuberances. *⁶ Long-edge feeding of A4 (8 ½" x 11") sheets from 2nd paper tray, using document glass, without Auto Colour Selection and Auto Colour mode, MFP in fully ready condition. May vary depending on operating conditions and environment. *⁷ Resolution will vary depending on the size of the scanned area. ** Colour/greyscale only. ** Storage capacity will vary depending on the type of document and the scan settings.

Design and specifications are subject to change without prior notice. All information was correct at time of print. The ENERGY STAR logo is a certification mark and may only be used to certify specific products that have been determined to meet the ENERGY STAR programme requirements. ENERGY STAR is a US registered mark. Windows, Windows XP, Windows Server and Windows Vista are registered trademarks of Microsoft Corporation. Adobe and PostScript 3 are either registered trademarks or trademarks of Adobe Systems Incorporated in the U.S. and/or other countries. All other company names, product names, and logotypes are trademarks or registered trademarks of their respective owners. ©Sharp Corporation March 2018. Ref: Interactive Brochure MX-8090N/MX-7090N Job Ref 18888. All trademarks acknowledged. E&OE.

Specifications



General
Copier
Network Printer
EFI Fiery Controller (optional MX-PE13 & MX-PE14)
Colour Network Scanner
Document Filing
External Dimensions

Resolution (dpi)	600 x 600, 1200 x 1200, 9,600 (equivalent) x 600
Interface	USB2.0, 10Base-T / 100Base-TX / 1000Base-T
Supported OS	Windows Server* 2008/2008R2/2012, 2012R2, 2016, Windows* 7, Windows* 8.1, Windows* 10 Mac OS X 10.6, 10.7, 10.8, 10.9, 10.10, 10.11, 10.12, 10.13
Network protocols	TCP/IP (IPv4 & IPv6)
Printing protocols	LPR, Raw TCP (port 9100), POP3 (e-mail printing), HTTP, FTP for downloading print files, IPP
PDL	PCL6, Genuine Adobe* PostScript* 3™
Available fonts	
PCL	80
Genuine Adobe* PostScript* 3™	139

Click the specification buttons for further information



*1 Long-edge feeding. *2 Only short-edge feeding can be used with A5 (5 1/2" x 8 1/2") paper. *3 At rated voltage, May vary depending on operating conditions and environment. ** HDD capacity depends on procurement and sourcing status. ** Including adjusters and protuberances. ** Long-edge feeding of A4 (8 1/2" x 11") sheets from 2nd paper tray, using document glass, without Auto Colour Selection and Auto Colour mode, MFP in fully ready condition. May vary depending on operating conditions and environment. *4 Resolution will vary depending on the size of the scanned area. ** Colour/greyscale only. ** Storage capacity will vary depending on the type of document and the scan settings.

Design and specifications are subject to change without prior notice. All information was correct at time of print. The ENERGY STAR logo is a certification mark and may only be used to certify specific products that have been determined to meet the ENERGY STAR programme requirements. ENERGY STAR is a US registered mark. Windows, Windows XP, Windows Server and Windows Vista are registered trademarks of Microsoft Corporation. Adobe and PostScript 3 are either registered trademarks or trademarks of Adobe Systems Incorporated in the U.S. and/or other countries. All other company names, product names, and logotypes are trademarks or registered trademarks of their respective owners. ©Sharp Corporation March 2018. Ref: Interactive Brochure MX-8090N/MX-7090N Job Ref 18888. All trademarks acknowledged. E&OE.

Specifications

General
Copier
Network Printer
EFI Fiery Controller (optional MX-PE13 & MX-PE14)
Colour Network Scanner
Document Filing
External Dimensions

Click the specification buttons for further information

Resolution (dpi)	1200 x 1200, 600 x 600 (PS)
Interface	Gigabit Ethernet
Supported OS	Windows Server® 2008, 2008 R2, 2012, 2012 R2, 2016, Windows® 7, 8.1, 10 Mac OS X 10.9, 10.10, 10.11, 10.12, 10.13 (Mac printer driver 5.0 and FEA 4.4 and later) (on Intel-based Mac OS computers)
Network protocols	TCP/IP, LDAP, iPrint through LPR
Printing protocols	LPD (TCP/IP network, LPR protocol) PAP: (Supported for font downloading) SMB: (Windows network over TCP/IP), Port9100, IPP1.1 FTP Printing: (from an FTP client to the Fiery Server) Print via E-mail: Sends jobs over e-mail for printing. WSD (Web Services for Devices): Supported by Windows 7 or later.



^{*1} Long-edge feeding. ^{*2} Only short-edge feeding can be used with A5 (5 ½" x 8 ½") paper. ^{*3} At rated voltage, May vary depending on operating conditions and environment. ^{**} HDD capacity depends on procurement and sourcing status. ^{**1} Including adjusters and protuberances. ^{**2} Long-edge feeding of A4 (8 ½" x 11") sheets from 2nd paper tray, using document glass, without Auto Colour Selection and Auto Colour mode, MFP in fully ready condition. May vary depending on operating conditions and environment. ^{**} Resolution will vary depending on the size of the scanned area. ^{**} Colour/greyscale only. ^{**} Storage capacity will vary depending on the type of document and the scan settings.

Design and specifications are subject to change without prior notice. All information was correct at time of print. The ENERGY STAR logo is a certification mark and may only be used to certify specific products that have been determined to meet the ENERGY STAR programme requirements. ENERGY STAR is a US registered mark. Windows, Windows XP, Windows Server and Windows Vista are registered trademarks of Microsoft Corporation. Adobe and PostScript 3 are either registered trademarks or trademarks of Adobe Systems Incorporated in the U.S. and/or other countries. All other company names, product names, and logotypes are trademarks or registered trademarks of their respective owners. ©Sharp Corporation March 2018. Ref: Interactive Brochure MX-8090N/MX-7090N Job Ref 18888. All trademarks acknowledged. E&OE.



Specifications

General
Copier
Network Printer
EFI Fiery Controller (optional MX-PE13 & MX-PE14)
Colour Network Scanner
Document Filing
External Dimensions

Scan method	Push scan (via operation panel) Pull scan (TWAIN-compliant application)
Resolution (dpi)	Push scan 75, 100, 150, 200, 300, 400, 600 Pull scan 50 - 9,600 via user setting**
File formats	TIFF, PDF, PDF/A, encrypted PDF, compact PDF ^{††} , JPEG ^{††} , XPS, searchable PDF, OOXML (docx, xlsx, pptx), text (TXT [UTF-8]), rich text (RTF)
Scan destinations	Scan to e-mail, FTP server, network folder (SMB), USB memory, HDD
Scanner utilities	Sharpdesk

Click the specification buttons for further information



[†] Long-edge feeding. ^{††} Only short-edge feeding can be used with A5 (5 1/2" x 8 1/2") paper. [‡] At rated voltage, May vary depending on operating conditions and environment. ^{†††} HDD capacity depends on procurement and sourcing status. ^{††††} Including adjusters and protuberances. ^{†††††} Long-edge feeding of A4 (8 1/2" x 11") sheets from 2nd paper tray, using document glass, without Auto Colour Selection and Auto Colour mode, MFP in fully ready condition. May vary depending on operating conditions and environment. ^{††††††} Resolution will vary depending on the size of the scanned area. ^{†††††††} Colour/greyscale only. ^{††††††††} Storage capacity will vary depending on the type of document and the scan settings.

Design and specifications are subject to change without prior notice. All information was correct at time of print. The ENERGY STAR logo is a certification mark and may only be used to certify specific products that have been determined to meet the ENERGY STAR programme requirements. ENERGY STAR is a US registered mark. Windows, Windows XP, Windows Server and Windows Vista are registered trademarks of Microsoft Corporation. Adobe and PostScript 3 are either registered trademarks or trademarks of Adobe Systems Incorporated in the U.S. and/or other countries. All other company names, product names, and logotypes are trademarks or registered trademarks of their respective owners. ©Sharp Corporation March 2018. Ref: Interactive Brochure MX-8090N/MX-7090N Job Ref 18888. All trademarks acknowledged. E&OE.

Specifications

General
Copier
Network Printer
EFI Fiery Controller (optional MX-PE13 & MX-PE14)
Colour Network Scanner
Document Filing
External Dimensions

Document filing capacity (pages/or files)

Main folder & Custom Folder	35,000** ⁹ or 5,000
Quick file folder	10,000** ⁹ or 1,000

Stored jobs	Copy, print, scan
--------------------	-------------------

Storage folders	Quick folder, main folder, custom folder (max.1,000)
------------------------	--

Confidential storage	Password protection
-----------------------------	---------------------

Click the specification buttons for further information



^{*1} Long-edge feeding. ^{*2} Only short-edge feeding can be used with A5 (5 ½" x 8 ½") paper. ^{*3} At rated voltage, May vary depending on operating conditions and environment. ^{**} HDD capacity depends on procurement and sourcing status. ^{**1} Including adjusters and protuberances. ^{**2} Long-edge feeding of A4 (8 ½" x 11") sheets from 2nd paper tray, using document glass, without Auto Colour Selection and Auto Colour mode, MFP in fully ready condition. May vary depending on operating conditions and environment. ^{**3} Resolution will vary depending on the size of the scanned area. ^{**4} Colour/greyscale only. ^{**5} Storage capacity will vary depending on the type of document and the scan settings.

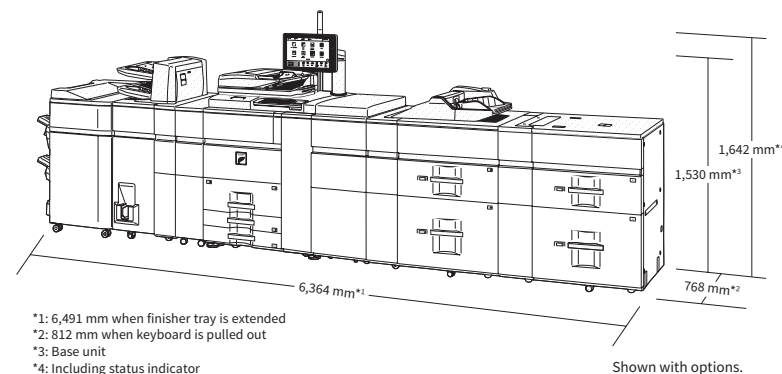
Design and specifications are subject to change without prior notice. All information was correct at time of print. The ENERGY STAR logo is a certification mark and may only be used to certify specific products that have been determined to meet the ENERGY STAR programme requirements. ENERGY STAR is a US registered mark. Windows, Windows XP, Windows Server and Windows Vista are registered trademarks of Microsoft Corporation. Adobe and PostScript 3 are either registered trademarks or trademarks of Adobe Systems Incorporated in the U.S. and/or other countries. All other company names, product names, and logotypes are trademarks or registered trademarks of their respective owners. ©Sharp Corporation March 2018. Ref: Interactive Brochure MX-8090N/MX-7090N Job Ref 18888. All trademarks acknowledged. E&OE.



Specifications

General
Copier
Network Printer
Efi Fiery Controller (optional MX-PE13 & MX-PE14)
Colour Network Scanner
Document Filing
External Dimensions

Click the specification buttons for further information



^{*1} Long-edge feeding. ^{*2} Only short-edge feeding can be used with A5 (5 ½" x 8 ½") paper. ^{*3} At rated voltage, May vary depending on operating conditions and environment. ^{*4} HDD capacity depends on procurement and sourcing status. ^{**} Including adjusters and protuberances. ^{**} Long-edge feeding of A4 (8 ½" x 11") sheets from 2nd paper tray, using document glass, without Auto Colour Selection and Auto Colour mode, MFP in fully ready condition. May vary depending on operating conditions and environment. ^{**} Resolution will vary depending on the size of the scanned area. ^{**} Colour/greyscale only. ^{**} Storage capacity will vary depending on the type of document and the scan settings.

Design and specifications are subject to change without prior notice. All information was correct at time of print. The ENERGY STAR logo is a certification mark and may only be used to certify specific products that have been determined to meet the ENERGY STAR programme requirements. ENERGY STAR is a US registered mark. Windows, Windows XP, Windows Server and Windows Vista are registered trademarks of Microsoft Corporation. Adobe and PostScript 3 are either registered trademarks or trademarks of Adobe Systems Incorporated in the U.S. and/or other countries. All other company names, product names, and logotypes are trademarks or registered trademarks of their respective owners. ©Sharp Corporation March 2018. Ref: Interactive Brochure MX-8090N/MX-7090N Job Ref 18888. All trademarks acknowledged. E&OE.