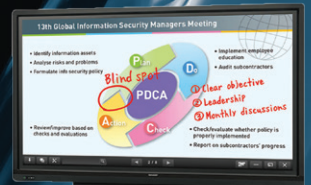
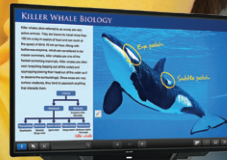


# SHARP®

## WORKFLOW SOLUTIONS FOR EDUCATION



"2019 Copier MFP Line of the Year"

Gain powerful workflow capabilities for both students and educators with Sharp multifunction document systems.

## A NEW BENCHMARK OF INNOVATION IN THE CLASSROOM

education

Sharp multifunction document systems offer innovative workflow solutions for learning environments to help administrators streamline document processing and enhance collaboration in the classroom. Sharp's latest models deliver powerful performance with stunning image quality and exceptional ease-of-use.

### Highlights

- Standard Cloud Connect features make it easy for educators to collaborate and share information with students and other staff using popular services such as Microsoft® OneDrive™ for Business, SharePoint® Online, Box, Dropbox, Google Drive™ and others.
- Powerful access-control and accounting features can help institutions better manage printing costs. Sharp multifunction document systems are also compatible with popular job accounting applications such as PaperCut MF™ and Pharos® Uniprint®, as well as Kayleigh Job Accounting Software.
- Sharp can offer students and teachers convenient, flexible access to mobile printing from devices such as tablets and smartphones. Sharp can also help institutions adopt 1:1 learning initiatives through innovative applications and support for popular mobile platforms and operating systems.
- Multi-level security features help protect confidential information and meet regulatory requirements such as FERPA and HIPAA. Sharp's convenient End-of-Lease feature can also erase all data and personal information from the device at time of trade-in.

Sharp offers a range of content management and workflow solutions to help educational institutions not only enhance traditional printing and scanning, but also embrace emerging technologies. Coupled with other Sharp products for education, including AQUOS BOARD® interactive display systems, these workflow solutions can help bring creativity and efficiency to classrooms and campuses.

*Students and teachers can collaborate with Sharp interactive displays.*



# ADVANCED TECHNOLOGIES TO ENHANCE LEARNING

## Maximize classroom learning, increase student engagement and improve staff performance.

Sharp offers exciting and innovative solutions to help educators, staff, and students embrace technologies and new education processes for the 21st century campus, while helping ensure institutions maintain IT security, meet regulatory compliance, control costs and ultimately help improve student engagement and achievement.

### *Integration with a Learning Management System Enables Greater Flexibility*

Sharp multifunction document systems integrate seamlessly with **BlackBoard Learn™**, a virtual learning environment and course management system that provides students and teachers with an easy-to-use platform to communicate and share content. Students can conveniently scan and submit assignments using any Sharp document system on campus.

### *Automated Grading Allows More Time for Teaching*

Sharp can help teachers save time and minimize the tedious task of manually grading tests and assignments. With **Remark®**, an automated grading solution from Sharp Partner Program member **Gravic®**, teachers can easily scan tests from a Sharp multifunction document system and quickly review the results.



### *Centrally Managed Printing Helps Lower Costs and Improve Efficiency*

Sharp along with Sharp Partner Program members offer managed print solutions for educational environments to help administrators lower printing costs. Easy-to-use accounting solutions such as **PaperCut MF™** and **Pharos Uniprint** offer seamless integration and can charge student accounts for print costs based on their login credentials, as well as allow them to print on any device throughout the campus.

### *Safeguard Your Information with Leading-edge Security Features*

Sharp MFPs are armed with multi-layered security features, including **Firmware Attack Prevention** and **Self Recovery**, which can help identify a malicious intrusion and restore the machine firmware to its original state. Also, the new **Whitelisting** feature detects attempts to the machine file system and denies access if the source data is not on the white list.

### *Save time and money by producing more documents in-house with Sharp's Pro Series*

With the Sharp Pro Series color and monochrome document systems, educational institutions can harness production-class performance, speed and image quality in-house. Available Fiery® print servers on both color and monochrome models offer powerful job management tools and can produce documents with stunning image quality. The Sharp Pro Series document systems are a perfect fit for in-house print shops and busy copy rooms where productivity and reliability are essential.



## Case Study

### Pepperdine University Malibu, California

#### BUSINESS CHALLENGES

Pepperdine University, which enrolls more than 7,500 students and employs more than 2,000 faculty and staff needed to find a manufacturer that not only provided quality printers but also helped control print spending and volume. Pepperdine had been using outdated imaging equipment that created excessive print costs, and when their lease ended they were ready to switch vendors and optimize their printing process.

#### TECHNOLOGY SOLUTIONS

Sharp offered a variety of MFPs equipped with print imaging software. Sharp's solution was integrated with the university's CBORD system and enabled Pepperdine to link digital imaging costs back to individual students and employees using ID cards or login credentials. The solution included the following:

- PaperCut MF print management software
- 81 Sharp workgroup MFPs distributed through Pepperdine's campus
- Three Sharp high speed document systems

#### PROVEN RESULTS

Sharp's solution has helped reduce print-related costs and print waste. This is thanks to PaperCut MF which allows staff to monitor print activity and spending.

# SHARP MULTIFUNCTION DOCUMENT SYSTEMS

## Advanced document solutions that can streamline workflow in educational environments.

Sharp multifunction document systems deliver powerful performance with stunning image quality and exceptional ease-of-use. Sharp's current models support the latest networking and imaging technologies available today, all to create document systems that deliver the workflow solutions that educational environments need. Also, with 30+ models that offer a common user experience and consistent feature set, training and operation is easier than ever.

### Key Features

- **Ease of Use** – Award-winning touchscreen display offers a user-friendly graphical interface with simplified Easy Modes, integrated user guides and quick access to network services. With Sharp's available MFP Voice feature, you can interact with the machine with the power of natural language.
- **Productive Features** – Standard full multifunction capability out-of-box, including copying, network printing and color network scanning, combined with Sharp's Microfine Toner Technology for long-lasting, high-quality output page after page.
- **Workplace Friendly** – Integrates seamlessly with today's complex network environments, and supports popular cloud services and mobile technologies. With Sharp's new Application Portal administrators can add new apps or update existing apps right from the MFP.



"PaceSetter Award in Ease of Use 2018-2019"



Sharp's customizable touchscreen display offers a user-friendly graphical interface, and is common across 30+ models.

## Designed to deliver performance and productivity.

- Built-in **retractable keyboard** on most models simplifies email address and subject line entries as well as repetitive scanning tasks and user authentication.
- **Customizable touchscreen** display with a clean design enables easy access to features and functions when setting up jobs.
- **MFP Voice feature** supported on most models enables users to control the device using simple verbal commands with **Amazon Alexa**.
- Access **popular cloud applications**, including Microsoft OneDrive for Business, SharePoint Online, Box, Dropbox and Google Drive with Sharp's Cloud Connect features.
- **Compact PDF** feature dramatically reduces the file size of scanned color documents, resulting in decreased network traffic and more efficient use of disk and cloud storage.
- Scan and print files from tablets and smart phones using **Sharpdesk® Mobile**, a free downloadable app for most mobile devices.
- Sharp MFPs support popular mobile technologies such as **Apple® AirPrint®**, **Android™** print framework and **Google Cloud Print™**.
- The **Adobe Embedded Print Engine** available on most models allows users to direct print PDF files from cloud services with greater accuracy and faster performance when on a deadline.
- Standard **duplexing document feeder** on most models scans both sides of a document in a single pass at speeds up to **220 images per minute (ipm)**, putting less wear on the feeder and your originals.
- **Standard security platform** includes 256-bit encryption, up to 10-times data overwrite and an End-of-Lease feature that can erase all data and personal information at time of trade-in.
- **Serverless Print Release** feature available on most models enables users to securely print a job and release it from up to six Sharp MFPs anywhere on campus that are on the same network.



# SHARP®

SHARP ELECTRONICS CORPORATION  
100 Paragon Drive, Montvale, NJ 07645  
1-800-BE-SHARP • www.sharppusa.com

Design and specifications subject to change without notice. Sharp, Sharp OSA, Sharpdesk, My Sharp, AQUOS BOARD and all related trademarks are trademarks or registered trademarks of Sharp Corporation and/or its affiliated companies. Microsoft, Office 365, Active Directory, Windows, Windows Server, Excel, PowerPoint, OneDrive, and SharePoint are trademarks or registered trademarks of Microsoft Corporation. Android, Chrome, Gmail, Google Drive, Google Cloud Print, and Chromebook are trademarks or registered trademarks of Google LLC. Adobe, the Adobe logo, PostScript, and PostScript 3 are either registered trademarks or trademarks of Adobe in the United States and/or other countries. Qualcomm DirectOffice is a product of Qualcomm Technologies, Inc. and/or its subsidiaries. Qualcomm is a trademark of Qualcomm Incorporated, registered in the United States and other countries. DirectOffice is a trademark of CSR Imaging US, LP, registered in the United States and other countries, used with permission. Amazon, Alexa, and all related logos and motion marks are trademarks of Amazon.com, Inc. or its affiliates. Blackboard and Blackboard Learn are trademarks or registered trademarks of Blackboard Incorporated. Gravic is a registered trademark of Gravic Inc. PaperCut MF is a trademark of PaperCut Software International. EFI, Fiery, the Fiery logo and the EFI logo are registered trademarks of Electronics For Imaging. Pharos and Uniprint are registered trademarks of Pharos Systems International. All other trademarks are the property of their respective owners.